

# Quick Installation Guide



WiFi + bluetooth multi-function adapter

## A Hardware Installation

### Set up Bluetooth+ WiFi Adapter

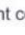
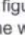
1. Pls plug the adapter into the usb port of computer directly  
Note :There are two functions for this adapter ,you could chose the WiFi or Bluetooth function which you need ,once chose one that other function you cannot use at the same time .

## B Wireless network card application

### 1、Install wireless adapter driver

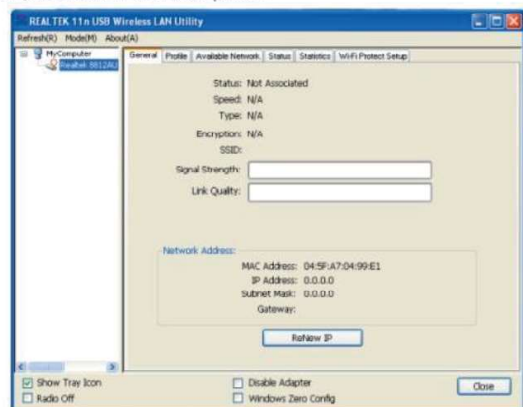
1. Find and run the "Setup .exe " in the CD driver as shown in the blew picture after you put the CD into your computer.
2. Click "Next" to setting up



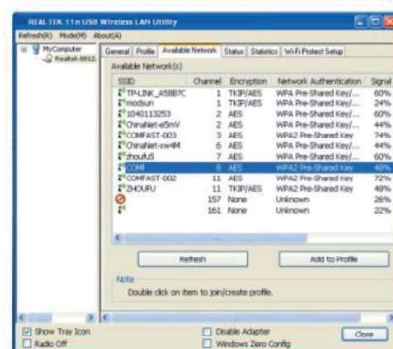
Once the application is installed ,the computer system will appear icon (REALTEK Client Management software ) at the bottom right corner of the task bar .This icon show that installation is successful .  
Note :After installation ,if the icon show , a blue crab shaped figure with a red cross at the bottom right corner ,it means two cases .One is the wireless adapter losing connection from computer ,please try other usb port to connect , another is the failure of installation ,pls to download the newest driver software from our official and install again .

### 2、Network Connection Settings

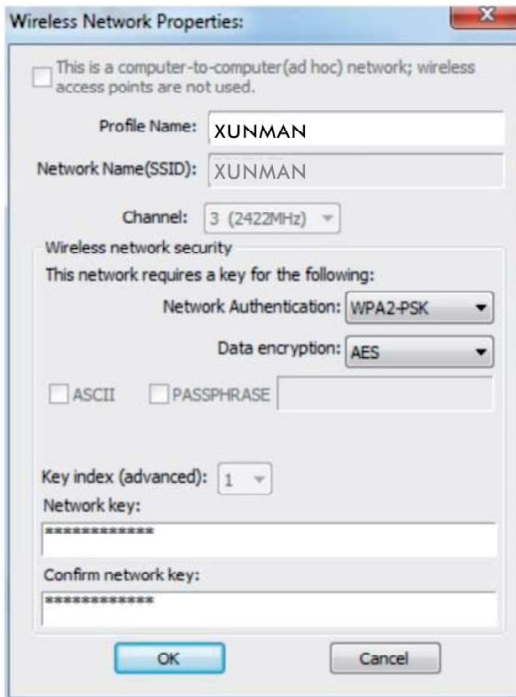
1. Double click the icon  that come into the wireless client management software, as shown in the follow picture



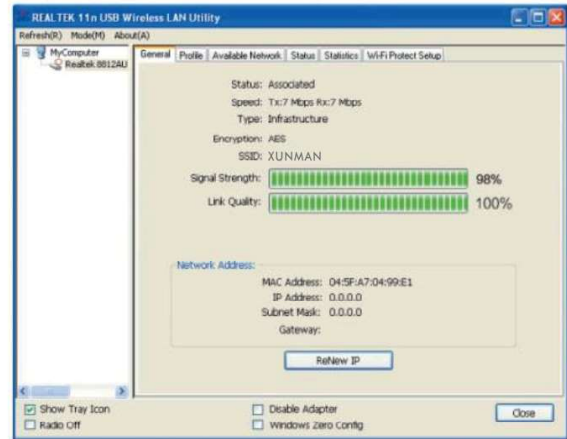
2. Click "Available Network " ,chose the SSID of the wireless network which you want to connect into "Add to profile ",as shown in the follow picture



3. Enter the network key and confirm the network key and chose ok ,as shown as the follow picture



4. After successful connection ,it will show the signal strength and link quality .As shown in the follow picture



Note: If it could not get the IP address or receive data packets ,the password maybe error ,pls reenter the correct password and get the IP address ,as shown in the picture

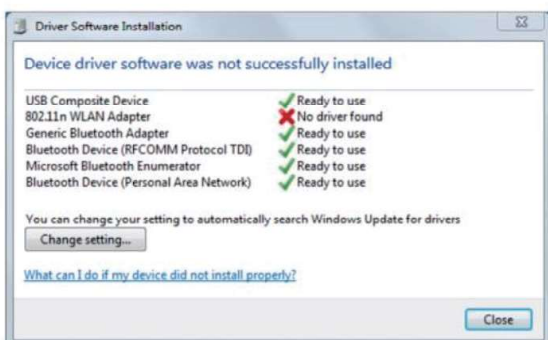
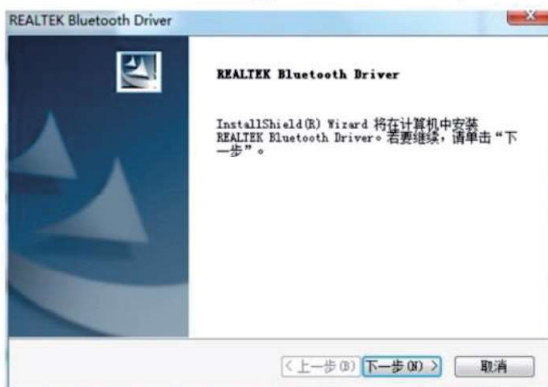
## Bluetooth devices application

### 1、Bluetooth Adapter Installation

Note: Bluetooth Adapter driver can only use on Windows7 ,Windows8 and Windows 8.1.In some cases inserted adapter to the Windows 7 , the system may automatically install bluetooth driver; This situation must be required to install CD with bluetooth driver can normal use.

1、 Run "Setup.exe" after you put the CD into the computer and click the name of CD .

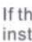
Click "Next" to continue setting ,as shown in the follow picture:



Chose "Yes" that agree to restart your computer ,press the "finish" to waiting the computer to start,as shown in the follow picture

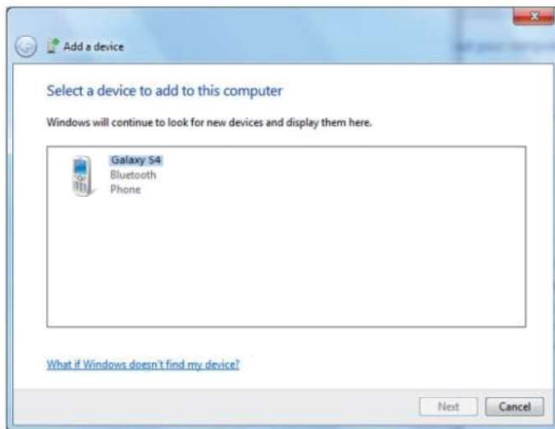


### 2、Bluetooth connect to devices

If the icon will show  Bluetooth Icon management software after installation,,it means installation is successfully .

After Bluetooth driver finish installing ,in the task bar has a Bluetooth signal icon, click on the "add equipment"; and open your phone , PC will search Bluetooth information of the mobile phone, as follow:





PC will appear verification code after you click "Next", at the same time mobile will receive the verification code from PC that match mobile phone with computer, PC click "next", you could use normally with the Bluetooth function.



Click on the Bluetooth icon in the task bar, select "show Bluetooth device", then select "send file" option to send the file to the mobile; At the same time mobile phone can also send the file to the computer.

